

Follow along and make your own antler t/d knobs from sheds that you find. These knobs on most custom bows can cost hundreds of dollars.

➤ **Cut and Drill The Antler Burrs**

Find 2 sheds that will give you matching burrs and cut them off the ends of the antlers. Make the cut parallel to the end of the antler about 1/2 an inch above the beginning of the burr. Drill a hole about 1/2 to 3/4 of an inch into the burr. The diameter of the hole should be slightly larger than the head of the bolt you are using.



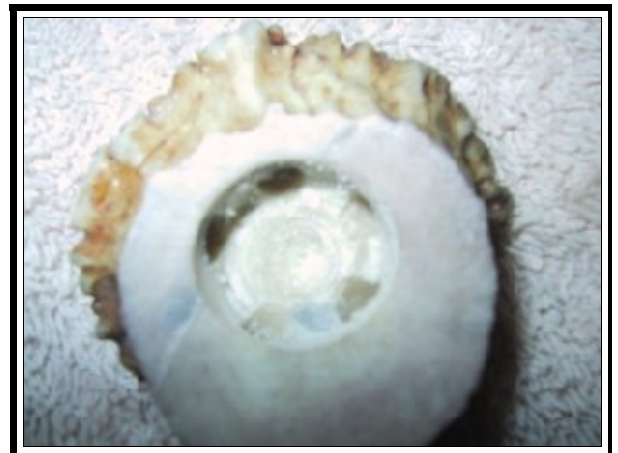
➤ **Drilling The Hole**

Drill the hole so that it is positioned in the center of the top of the burr (the end opposite of your sawed end) Drilling the hole in this manner will be completely off center of the end you are drilling...trust me though. You want the knob to be as balanced as possible for aesthetic purposes once it is installed.



➤ **Drilling the 'Glue Holes'**

Once you have the main hole drilled, you will want to drill several much smaller holes a fraction of an inch deeper than the main hole. This will hold the epoxy and help stop the burr from turning out.



⇒ The Next Step...

Now we are ready to install the bolt and glue it in place. We have to prepare the bolt first.

⇒ Prepping the Bolt

You can simply use the same bolt that came with the bow. On the rare occasion you need to replace it, just make sure it is the right length and thread before proceeding. To make sure that the bolt does not work loose over the years you will have to score the edges. I used a grinder here, but a hacksaw will work nicely. Just make the head ragged and jagged to be able to grip the epoxy.

⇒ Installing the Bolt

Before you epoxy the bolt into the antler knob, you will need to tape the limbs of your bow around where the knob will be when it's finished. This will protect the finish of your bow from the epoxy.

Partially fill the hole in the antler with five minute epoxy. I don't think it matters what brand, Just find the strongest one. Set the bolt into the wet epoxy and let stand for a couple minutes. What you want to do is get the epoxy set enough that the bolt won't spin loose as you are threading it into the bow, but not set enough that it won't be pliable. Thread the bolt carefully through the limb of your bow and into the riser. Do not tighten too much that the bolt will loosen just down enough that the antler will level itself on the limb. Now you just simply let it sit until the epoxy is fully cured and you're done!

⇒ Finishing...

Take a file and clean off any jagged pieces of epoxy. You will also want to get a couple nylon washers. Make sure they are really thin. This way your new knobs will not mar the finish on that expensive bow. Enjoy what you have just created! That's traditional archery!

